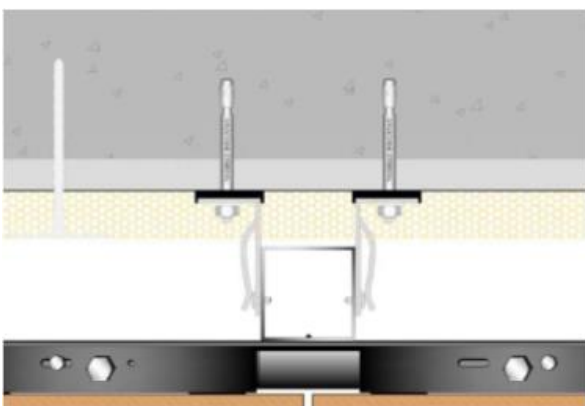


## TECHNICAL SPECIFICATIONS

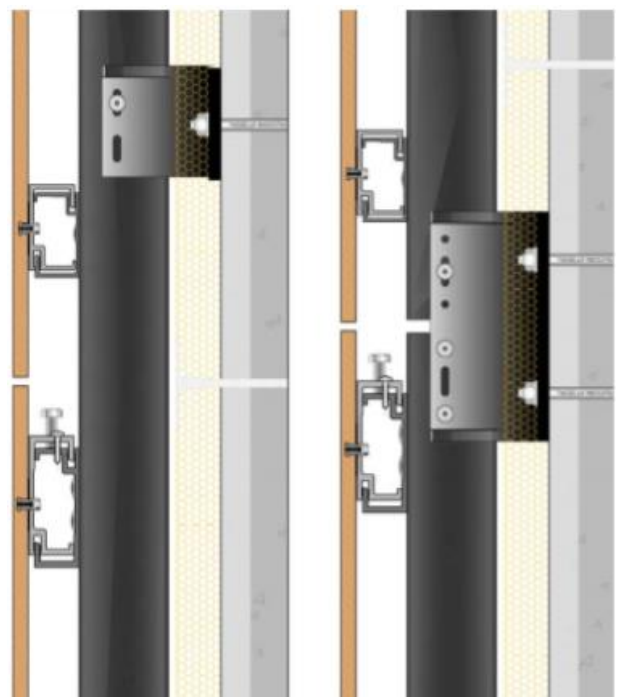
All Granitech ventilated facades are based on integrated systems comprising variable thickness porcelain tiles (we recommend safety mesh as itemized in UNI 11018:2003), insulating layer and aluminum structure. The structure consists of extruded profiles and brackets in 6000 series, 6060 aluminum alloy, in accordance with European standard UNI EN 573-3, T6 physical properties (UNI EN 515).

GHS Maxi ventilated facades consist of the following components:

- Thermal spacer in shaped polypropylene, to be positioned between the anchor bracket and the building wall.
- L-section anchor bracket, with longitudinal ridge, equipped with a spring created by bending the bracket itself.
- A4/A2 stainless steel anchor bolts, mechanical type or with chemical anchoring
- Black painted T-section uprights; the surface of the core features longitudinal ridges for fixing anchor brackets
- Aluminum or stainless steel rivets for fixing the uprights to the brackets
- Painted C-section cross pieces with wind bracing, and suitably larger sealed C-section cross pieces
- Painted aluminum or stainless steel rivets for fixing the cross pieces to the uprights.
- Concealed fixing accessories for tiles (compatible with above cross pieces), complete with gasket, controlled expansion mechanical anchors and truncated-tapered holes on the tiles
- 10 to 12 mm thick porcelain tiles, with a continuous vertical joint or staggered vertical joints (tile thickness must always be checked in advance).



HORIZONTAL SECTION



VERTICAL SECTION