



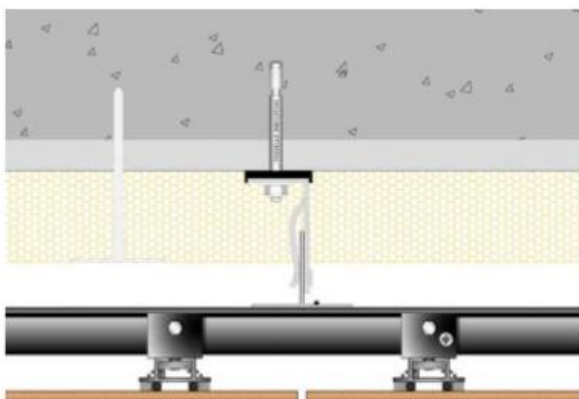
**CONCEALED
DOUBLE FRAME SYSTEM
WITH STRUCTURAL ADHESIVE.
THICK TILES
6 MM**

TECHNICAL SPECIFICATIONS

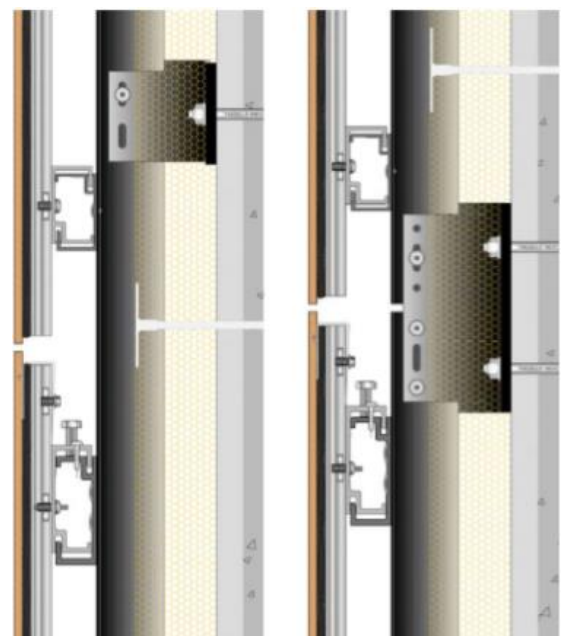
All Granitech ventilated facades are based on integrated systems comprising variable thickness porcelain tiles (we recommend safety mesh as itemized in UNI 11018:2003), insulating layer and aluminum structure. The structure consists of extruded profiles and brackets in 6000 series, 6060 aluminum alloy, in accordance with European standard UNI EN 573-3, T6 physical properties (UNI EN 515).

GHL ventilated facades consist of the following components:

- Thermal spacer in shaped polypropylene, to be positioned between the anchor bracket and the building wall.
- L-section anchor bracket, with longitudinal ridge, equipped with a spring created by bending the bracket itself.
- Suitable fixing for anchoring to the support.
- Black painted T-section uprights, the surface of the core features longitudinal ridges for fixing anchor brackets (where necessary they may be substituted for tubular square profiles).
- Aluminum or stainless steel rivets for fixing the uprights to the brackets.
- Painted C-section cross pieces.
- Aluminum or stainless steel rivets, for fixing the cross pieces to the uprights.
- Preparation of the surfaces of structural joint supports, in accordance with manufacturer's recommendations (ETAG 002 and EN 13022).
- Silver anodized secondary support profile, previously fixed to the tile in a protected environment at the factory, with structural silicone and bottom joint.
- Safety accessory, mechanical fixing between tile and structure.
- Concealed accessory for fixing the tile to the primary frame.
- 6mm porcelain tile, with variable size and finish installed with continuous vertical joints or staggered vertical joints.



HORIZONTAL SECTION



VERTICAL SECTION