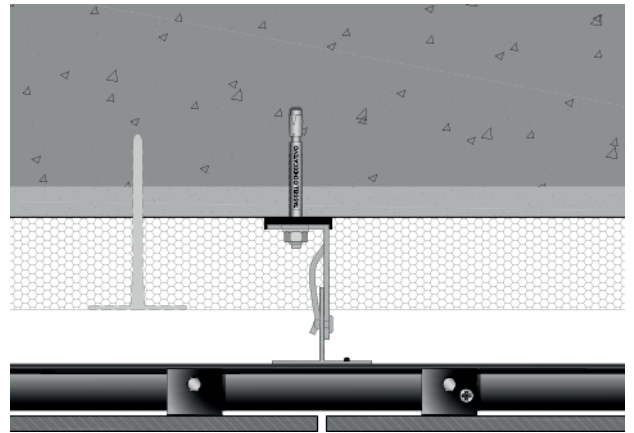


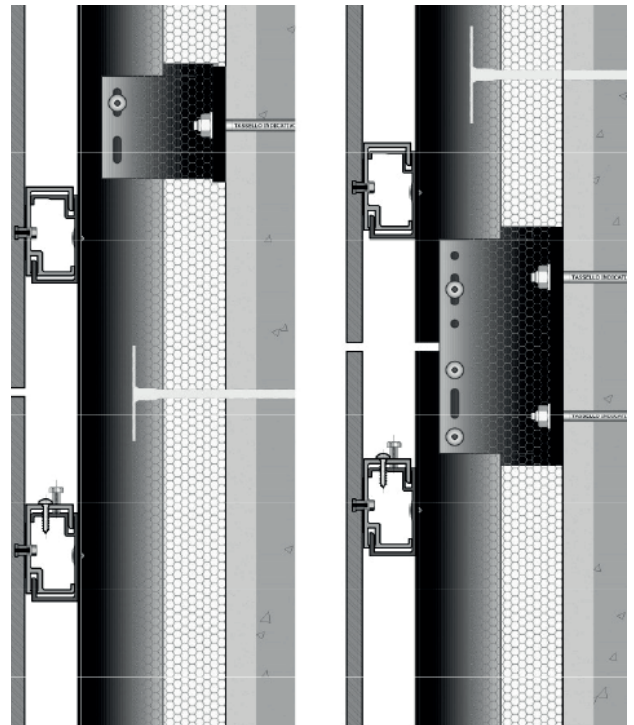
GHS

CONCEALED MECHANICAL SYSTEM 8 TO 11 MM THICK TILES

HORIZONTAL SECTION



VERTICAL SECTION



GHS ventilated facades consist of the following components

- L-section **anchor bracket**, with **stainless steel anchor bolts** and **thermal spacer** to be positioned between the anchor bracket and the building wall.
- Black painted T-section **uprights**
- Painted C-section **cross pieces**.
- **Concealed fixing accessories for tiles**, complete with **gasket**, **controlled expansion mechanical anchors** and **truncated-tapered holes** on the tiles.
- **8 to 11mm thick porcelain tiles**, with continuous vertical or brick bond joint.