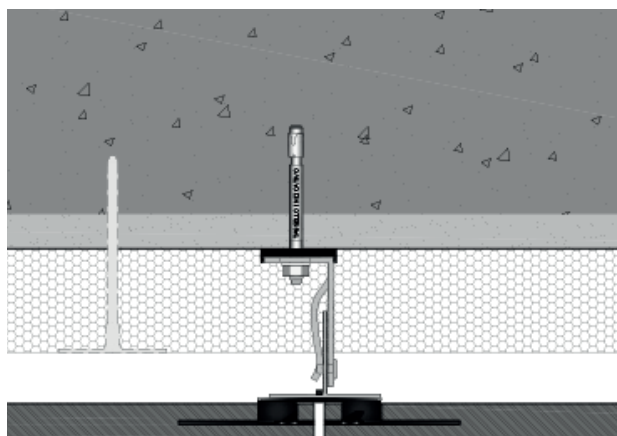


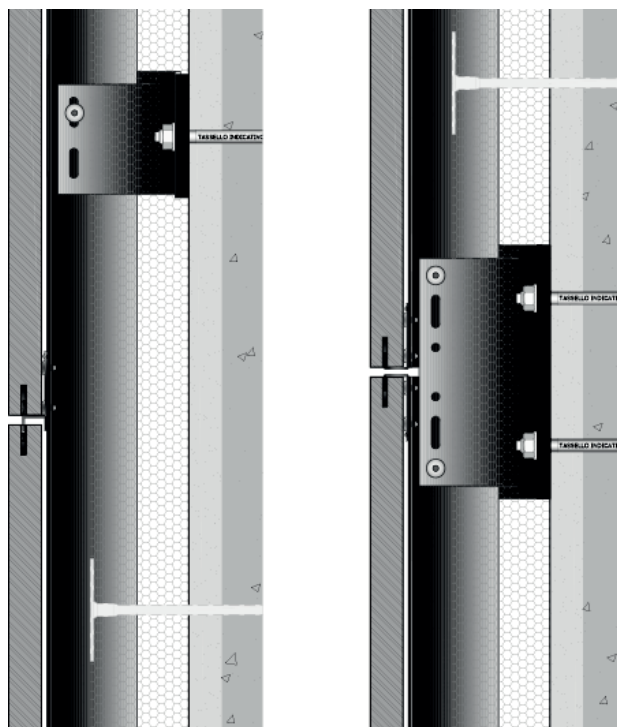
GHS 2

CONCEALED MECHANICAL SYSTEM 20 MM THICK TILES

HORIZONTAL SECTION



VERTICAL SECTION



GHS 2 ventilated facades consist of the following components:

- L-section **anchor bracket**, with **stainless steel anchor bolts** and **thermal spacer** to be positioned between the anchor bracket and the building wall.
- Black painted T-section or square tubular **uprights**
- **Pre-shaped** black painted, **stainless steel plate** to mechanically lock the tile
- **20mm thick porcelain tiles** installed with a continuous vertical joint.