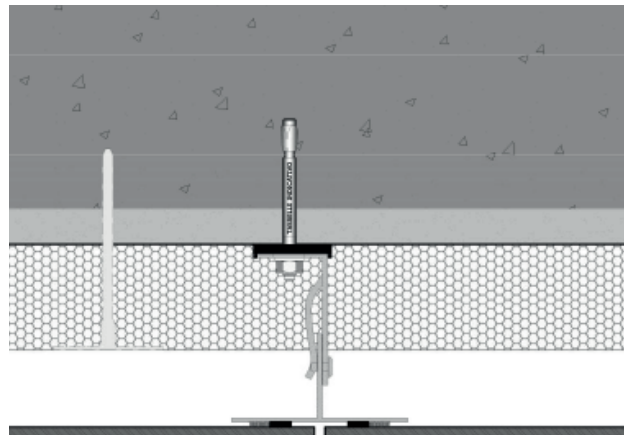


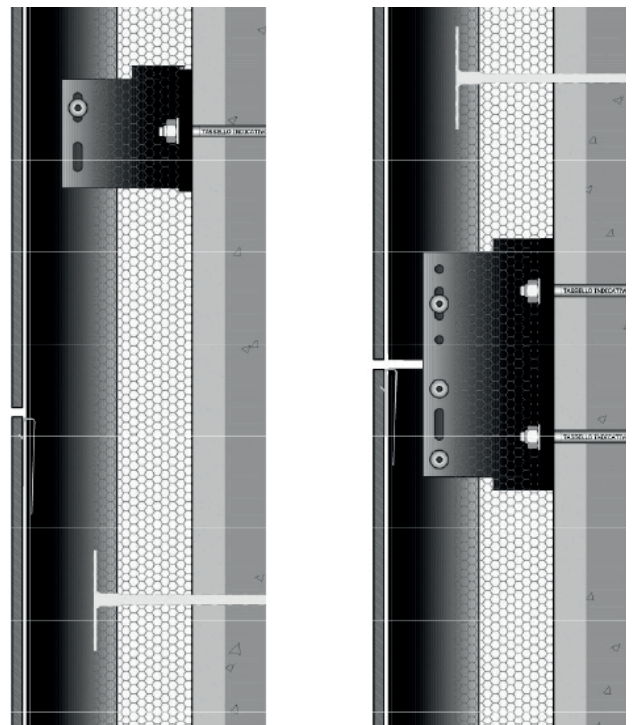
# GHP

## CONCEALED SYSTEM WITH STRUCTURAL ADHESIVE 6MM THICK TILES

### HORIZONTAL SECTION



### VERTICAL SECTION



**GHP ventilated facades** consist of the following components:

- L-section **anchor bracket** with **anchor bolts**, **safety accessory** and **thermal spacer** to be positioned between the anchor bracket and the building wall.
- Black painted T-section **uprights**, where necessary they may be substituted for tubular square profiles
- **6mm thick porcelain tiles**, installed directly on the uprights with single component structural adhesive fixing, with continuous vertical joint or staggered vertical joint